

Ezee-On

**MODEL 8550 DISC
HEAVY DUTY OFFSET**

ASSEMBLY INSTRUCTIONS

Manufactured by
Ezee-On Manufacturing
Vegreville, Alberta Canada

725G

Printed in Canada

MODEL 8550 ASSEMBLY INSTRUCTIONS

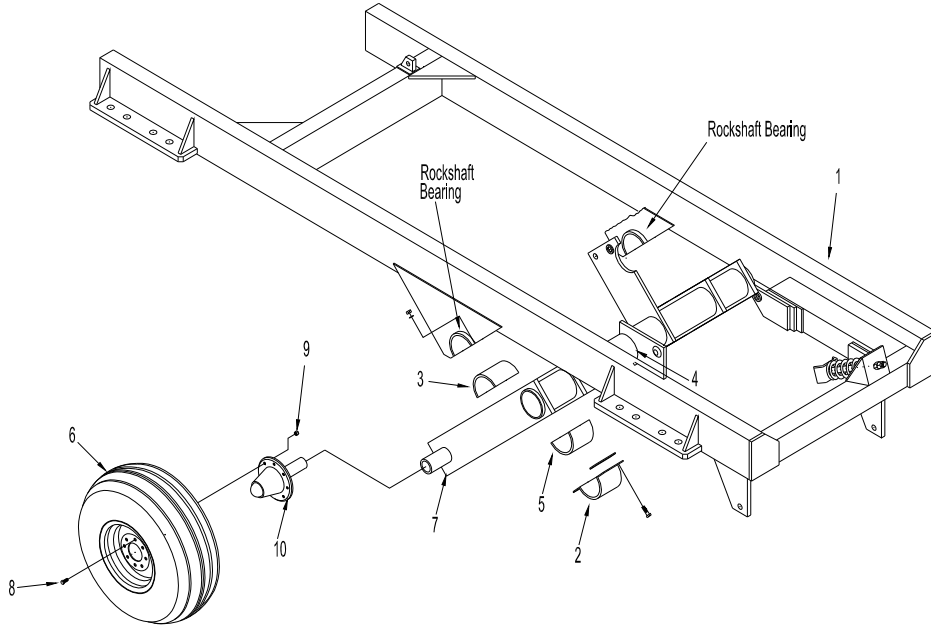
DESCRIPTION	PAGE
Assembling Main Frame	20
Assembling Hitch and Levelling Crank	21
Attaching Lift Hydraulic System	22
Attaching Gang Beams	23
Attaching Gang Assemblies	24
Attaching Blade Scraper Assemblies	25
Scraper Bar Patterns	26 – 28
Reflector Decal Installation	29
Safety Light Kit Assembly	30
Warning Light Kit	31
Gang Patterns	32 - 34

ASSEMBLY INSTRUCTIONS

1. See ILL. 1. Raise frame, arrow 1, approximately 30" from ground and block securely.

 **CAUTION:** Support main frame securely before assembling components. Heavy frame could cause serious injury if it fell

IMPORTANT: TO INSTALL TIRES TO INNER HUBS, FOLLOW INSTRUCTIONS ON PAGES 4 AND 5.




2. See ILL. 1. Clean and lubricate bearing surface of rockshaft. Then remove rockshaft bearing cap, arrow 2, from each rockshaft bearing. Next, place bearing liner, arrow 3, in each rockshaft bearing and liner with 45 degree grease fitting then install rockshaft, arrow 4, in bearings. Next place one bearing liner with straight grease fitting, arrow 5, over rockshaft beneath each rockshaft bearing. Then secure each rockshaft to each bearing with one (1) bearing cap, arrow 2. Secure each bearing cap with (2) 3/4" x 2-1/2" (19 x 63mm) hex bolt c/w nuts.

NOTE: *It will be necessary to install shims between rockshaft bearing caps, arrow 2, and rockshaft bearing to allow rockshaft to turn freely in bearing when bearing cap bolts are tightened. It is important to install the correct number of shims, rockshaft must be snug but free to turn.*

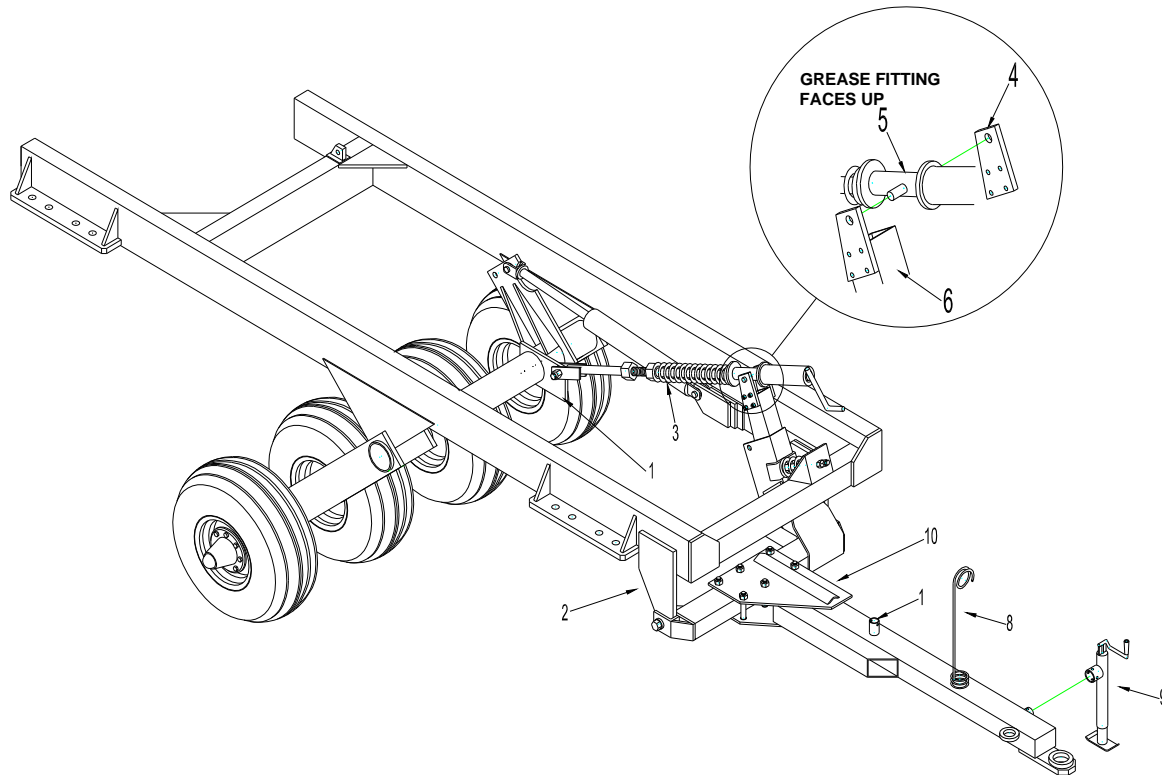
 **CAUTION:** Use an aligning punch to line up holes. Keep fingers out of these holes. Any sudden movement of heavy components will severely injure or sever your fingers.

3. See ILL. 1. Install one (1) eight bolt wheel and 12.5L x 15 FI tire assembly, arrow 6, on each of the four (4) hub assemblies, arrow 7. Secure each wheel with eight (8) 9/16" x 1-11/16" (14 x 42mm) wheel bolts, arrow 8. Tighten wheel bolts to 150 ft. lbs. (203.0 N.m.) Lock each wheel bolt by installing one (1) 9/16" (14mm) N.F. hex nut, arrow 9, on thread that extends past hub. Tighten nuts.

 **IMPORTANT:** Wheel bolts must be kept tight. If bolts are not tight, they will loosen causing severe damage to hub, wheel and tire. Check wheel bolts periodically, especially the first few hours of operation either transport or field work.

 **CAUTION:** Use a hoist or adequate manpower to lift the heavy components into place. Use adequate jacks or support materials. Attempting to lift heavy components by yourself could cause serious injury.

ILL. 2



4. See ILL. 2. Fasten hitch assembly, arrow 1, to two hitch lugs, arrow 2, on frame. Fasten with two (2) 1-1/4" (31.7mm) dia. hex. bolts c/w locknut.
5. See ILL. 2. To attach levelling link, arrow 3, remove bolt on lug, arrow 4, from levelling arm of hitch. Next place bearing tube, arrow 5, of crank assembly between weld-on lug, arrow 6, and bolt-on lug, arrow 4. Position bearing tube so grease fitting is facing up. Install ears of bearing tube, arrow 5, in 1" (25.4mm) holes of lugs, arrow 4 and 5, then fasten bolt-on lug to levelling arm with four 1/2" x 5" (12.7mm x 127mm) bolts.

Next attach clevis end of levelling link, arrow 3, to arm, arrow 7, on rockshaft with one 1-1/4" x 4-3/4" (31.7mm x 120.6mm) bolts c/w nuts and lockwashers.

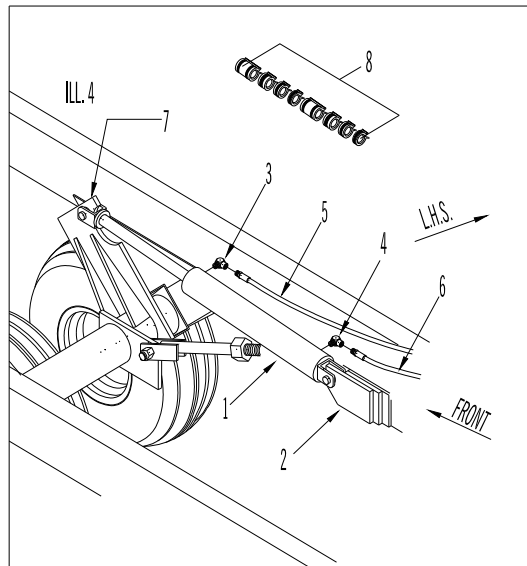
NOTE: *The 1-1/4" x 4-3/4" (31.7mm x 120.6mm) bolts must be tightened so that the clevis is drawn up tight against the ball joint in arm, arrow 7. Tighten bolt to 840 ft. lbs. (1139 N.m) Ball must be free to pivot in socket. Lubricate ball with oil and turn in socket to make sure ball is free to pivot.*

6. See ILL. 2. Fasten hose support, arrow 8, to 5/8" (15.7mm) bolt welded to top of hitch. Secure with one (1) 11/16" I.D. (17.2mm) flatwasher, and one (1) 5/8" (15.7mm) hex nut.
7. See ILL. 2. Mount jack, arrow 9, on round tube at SIDE of hitch when supporting disc hitch. Mount jack on round tube, arrow 11, on top side of hitch when transporting or discing. Lock jack in desired position with pin.



IMPORTANT:

HITCH JACK MUST BE MOUNTED TO ROUND TUBE, ARROW 11, ON TOP OF HITCH WHEN DISC IS IN MOTION. IF JACK IS LEFT ON THE SIDE OF THE HITCH (IN VERTICAL POSITION), THE JACK MAY STRIKE GROUND OR OBSTRUCTIONS ON GROUND. IF JACK IS LEFT ON THE SIDE OF THE HITCH (HORIZONTAL POSITION), TRACTOR TIRES MAY HIT THE JACK, CAUSING SEVERE DAMAGE TO THE HITCH JACK.



8. ATTACHING HYDRAULIC LIFT CYLINDER

IMPORTANT: SEAL ALL HYDRAULIC FITTINGS WITH A SEALANT LIQUID

- a) See ILL. 4. Attach barrel end of 4" x 24" (101.6mm x 609.6mm) hydraulic, arrow 1, to cylinder lug, arrow 2. Position cylinder so ports are facing L.H.S. of disc. Secure with (1) 1-1/4" x 4-3/16" (31.7mm x 106.4mm) pin. Secure pin with one (1) 5/16" x 2" (7.9mm x 50.8mm) cotter pins. To complete the assembly of cylinder, place a wooden block across top of frame for cylinder to rest on.
- b) See ILL. 4. Install 1/2" (12.7mm) x 90 degree street elbows, arrows 3 and 4, in ports on L.H.S. of cylinder. Face elbows towards front of disc.
- c) See ILL. 4. Install one (1) 1/2" x 216" (12.7mm x 5486mm) hydraulic hose, arrow 5, to rear 1/2" (12.7mm) street elbow, arrow 3.
- d) See ILL. 4. Install one (1) 1/2" x 190" (12.7mm x 4826mm) hydraulic hose, arrow 6, to rear 1/2" (12.7mm) street elbow, arrow 4.
- e) Run hose along frame and hitch to hose support, arrow 8. Check if hoses run through tube, arrow 10 at front of frame. See ILL. 2.
- f) See ILL. 4. Install proper male tips to ends of hoses, arrow 5 and 6.
- g) Connect hose to tractor hydraulic couplers.
- h) Block cylinder high enough for cylinder shaft to pass over top of rockshaft cylinder arm. Pump hydraulic oil into shaft side of cylinder. When shaft side is full of oil, extend and contract cylinder approximately 10" or 12" to work air out of cylinder.



CAUTION: BEFORE APPLYING PRESSURE TO HYDRAULIC SYSTEM, BE SURE ALL CONNECTIONS ARE TIGHT AND COMPONENTS ARE NOT DAMAGED.

- i) See ILL. 4. After lift cylinder is completely filled with oil, pin shaft end of cylinder to rockshaft cylinder arm, arrow 7, with one (1) 1-1/4" x 4-3/16" (31.7mm x 106.4mm) pin. Secure pin with one (1) 5/16" x 2" (7.9mm x 50.8mm) cotter pins.

IMPORTANT: When extending cylinder, be sure end or clevis **DOES NOT** strike rockshaft cylinder arm. Serious cylinder damage could result.

9. See ILL. 4. Fully extend lift cylinder, arrow 1, to raise disc frame. Next install all depth control segments, (17-3/4" Lg) arrow 8, on lift cylinder shaft, to lock frame in raised position.



CAUTION: DO NOT LOOSEN OR DISASSEMBLE HYDRAULIC COMPONENTS WHEN THERE IS PRESSURE WITHIN THOSE COMPONENTS. HYDRAULIC COMPONENTS UNDER PRESSURE MAY CAUSE PARTS AND HYDRAULIC FLUID TO ESCAPE AT A HIGH VELOCITY, WHICH COULD CAUSE SERIOUS INJURY. ALWAYS RELIEVE THE PRESSURE IN THE HYDRAULIC SYSTEM BEFORE MAKING ADJUSTMENTS TO THE HYDRAULIC SYSTEM. IF INJURED BY ESCAPING HYDRAULIC FLUID, SEE A MEDICAL DOCTOR IMMEDIATELY.

10. ATTACHING GANG BEAMS - See ILL. 5 and 6

- a) Use the gang beam chart on page 18b to determine length of front and rear gang beams for your size specific disc.
- b) Locate gang beams, arrow 1, at bottom of frame.

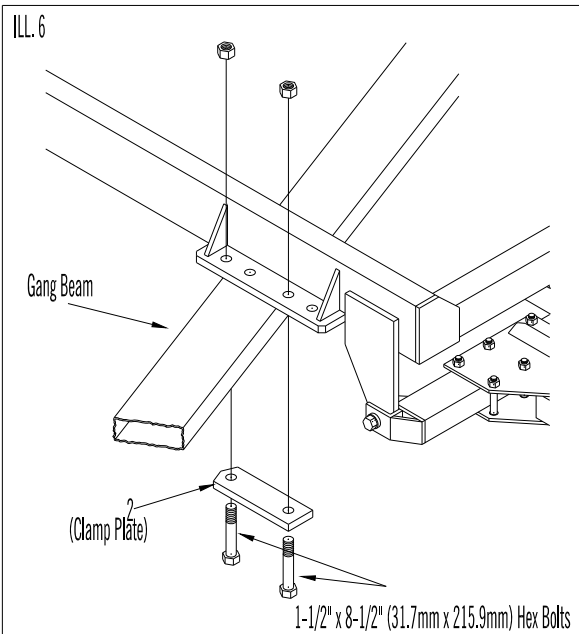
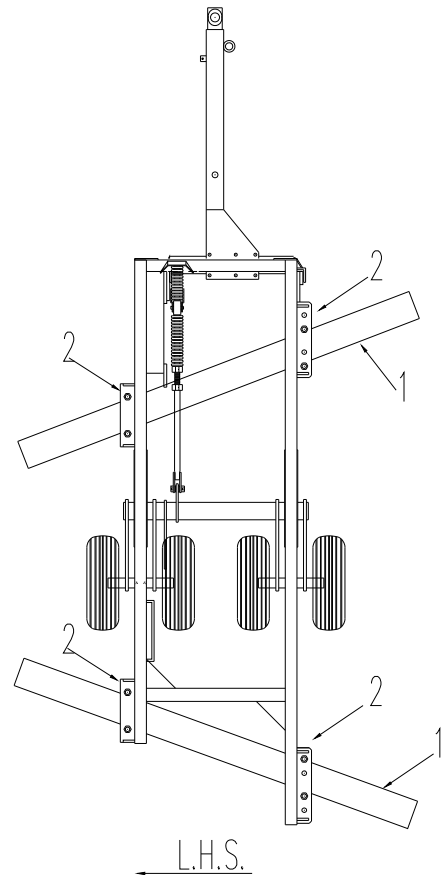
Each gang beam is located between two (2) holes in plate welded to left side of main frame.

A 6 hole plate welded to outside of frame will secure each beam to right side of disc.

- c) Fasten each gang beam with two (2) clamp plates, arrow 2, and two (2) 1-1/2" x 8-1/2" (38 x 216mm) hex bolts. See ILL. 6. Cropped corners of clamp plates must be on rear side of gang beams.
- d) Initially set gang angle at second hole from maximum. For rear gang, install rear bolt in second hole from rear as shown in ILL. 5.

For front gang, install front bolt in second hole from front as shown in ILL. 5.

ILL. 5



CAUTION: BEFORE ATTACHING GANGS TO FRAME BE SURE FRAME IS LOCKED IN RAISED POSITION BY INSTALLING TRANSPORT LOCK ON LIFT CYLINDER. SEE SECTION 5 ON PAGE 16.

11. ATTACHING GANG ASSEMBLIES:

ILL. 7

NOTE: See gang pattern on pages 32 to 34. Select diagram which illustrates gang pattern for your disc.

USING GANG PATTERN - Identify the front and rear gangs. Front and rear gangs are determined by the 5/8" x 10" (16 x 254mm) bearing retainer bolt. With the blades are correctly orientated the nut end of 5/8" x 10" (16 x 254mm) bolt will face rear of axle. See Detail "A".

a) REAR GANGS:

See ILL. 7. The rear gangs have the outrigger blade (small dia. blade) at one end. If your model has more than one gang assembly on rear gang, be sure to place gang with outrigger blades on the right hand side.

Using the gang pattern illustration (on pages 32 to 34), select the rear gangs and position them in their proper place under the rear gang beam.

Attach bearing hangers to gang beams with (2) U-bolts per bearing hanger. See Detail "A". Leave U-bolts loose.

b) FRONT GANGS:

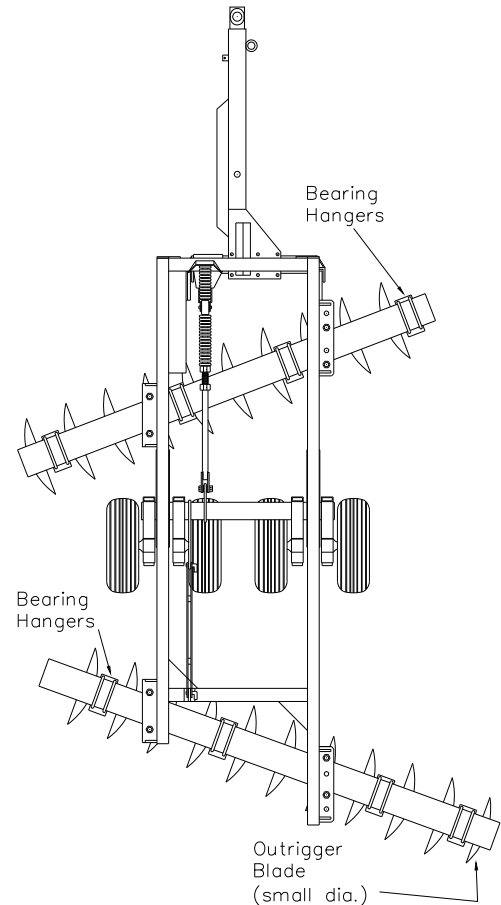
Using the gang pattern illustrations (on pages 32 to 34), select the front gang(s) and position them in their proper place under the front gang beam. Attach bearing hangers to gang beams with (2) U-bolts per bearing hanger. Leave U-bolts loose.



CAUTION: When attaching gang assemblies, wear protective gloves to help prevent injury from cutting edges of blades.

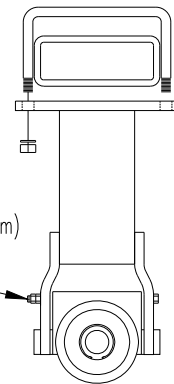
- c) If front or rear gang has more than one gang assembly, adjust spacing between gang assemblies. This spacing should be same distance as the blade spacing in gang assemblies.
- d) Before tightening bearing hanger U-bolts, check each bearing hanger to make sure hanger is sitting square under gang beam. Also, be sure hanger is not turned to one side.

IMPORTANT: If bearing hangers are not sitting square before tightening U-bolts, side preload will be built into the bearings and the life of the bearings will be shortened.



DETAIL - A

Double nut end of
5/8" x 10" (15.7 x 254mm)
Bearing Retainer Bolt



12. ATTACHING BLADE SCRAPER ASSEMBLIES

NOTE: See scraper support patterns on pages 26 to 28. Select diagram which illustrates proper pattern for your disc.

- a) See ILL. 8. Before attaching scraper assemblies, determine which assembly belongs to front and which one belongs to rear. The rear gang has 1 more scraper than the front gang. For example, a 23 blade disc will have 11 scrapers on front gang and 12 scrapers on rear gang.
- b) See ILL. 8 and 9. Attach scraper assemblies to gang beams with 3/4" x 4" x 18" (19 x 102mm x 457mm) scraper support plates, arrow 1, with (2) 7/8" x 10" (22mm x 254mm) U-bolts and (1) 5/8" x 2" (16mm x 50.8mm) U-bolt. Scrapers are located at rear side of gang beams.

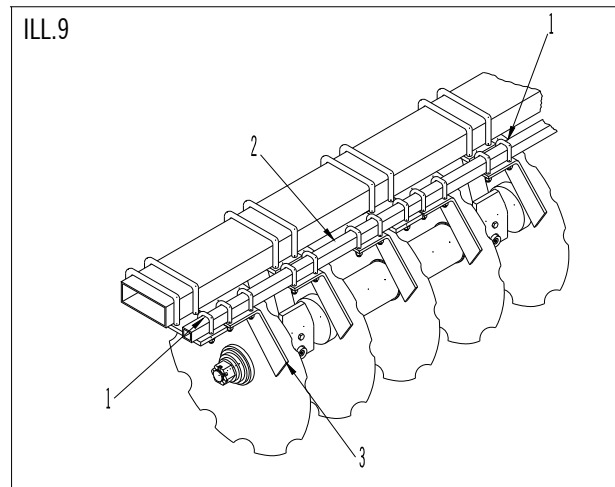
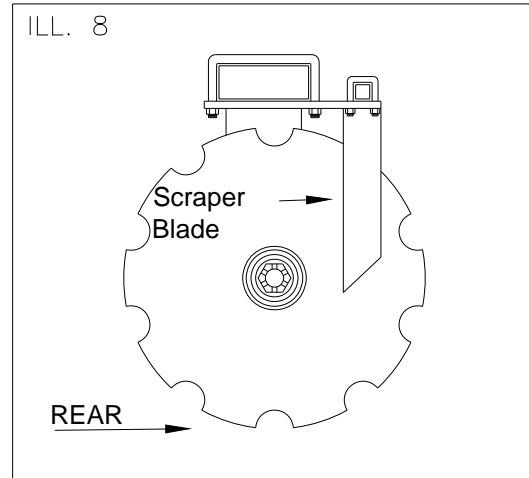
Position scraper supports, arrow 1, at bottom of gang beam, and fasten with (2) 7/8" x 10" (22.3mm x 254mm) U-bolt c/w nuts and lockwashers. Place scraper bar assembly on top of support plate.

Fasten scraper bar to clamp plate with (1) 5/8" x 2" U-bolt per support plate assembly. See scraper support patterns on pages 26 to 28. Select correct pattern for your disc and locate scraper support plates as shown.

13. See ILL. 9. Adjust scraper bar, arrow 2, and scrapers, arrow 3, of each gang, so each scraper contact adjacent disc blade.

14. Tighten all scraper mount U-bolts.

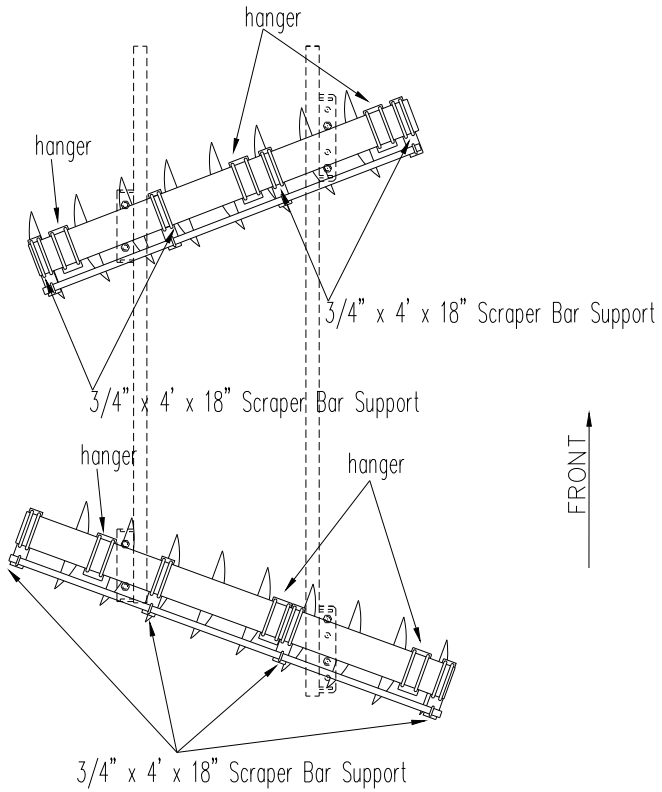
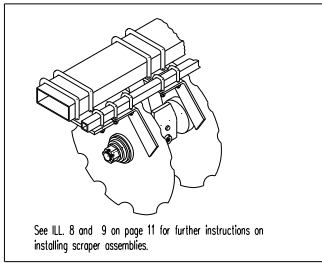
IMPORTANT: Disc will require less horsepower to pull if scrapers are adjusted properly.



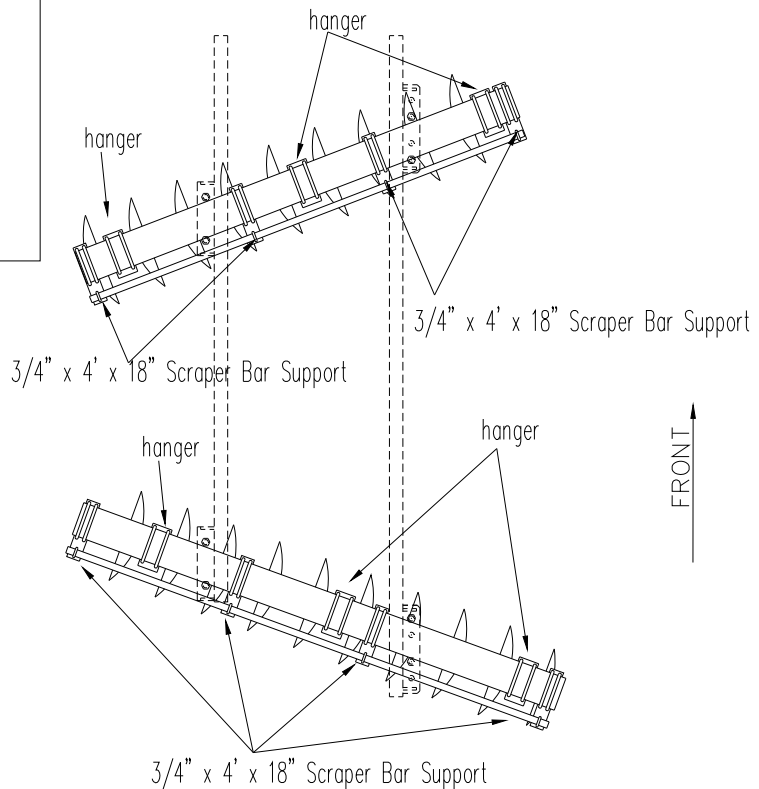
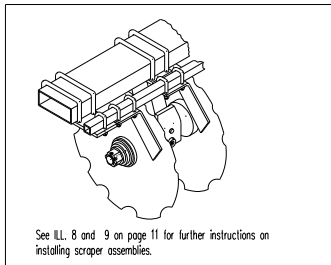
CAUTION:

Support the main frame securely before assembling the components. Inadequate support may result in the heavy components falling causing serious injury to operator or person(s) nearby.

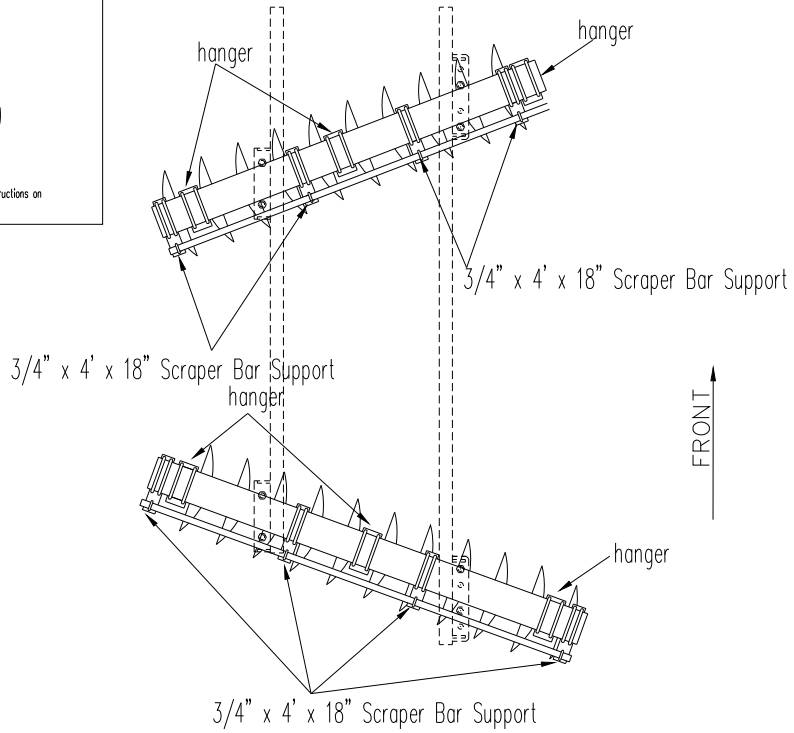
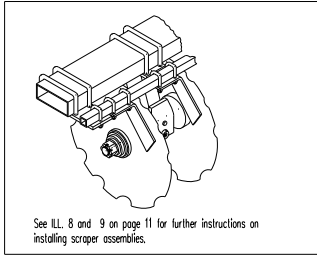
SCRAPER BAR SUPPORT PATTERN - MODEL 8550
17 BLADE - 14" (356mm) SPACING



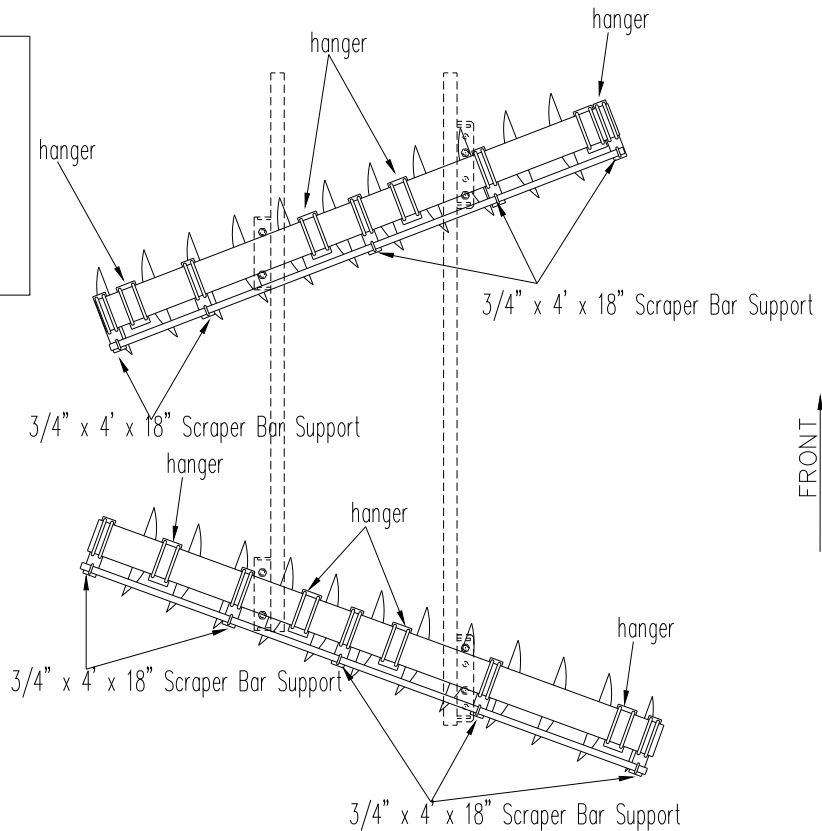
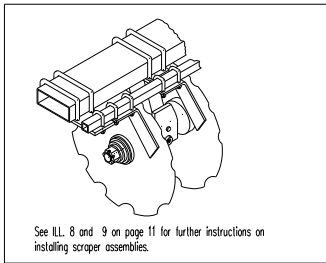
SCRAPER BAR SUPPORT PATTERN - MODEL 8550
19 BLADE - 14" (356mm) SPACING



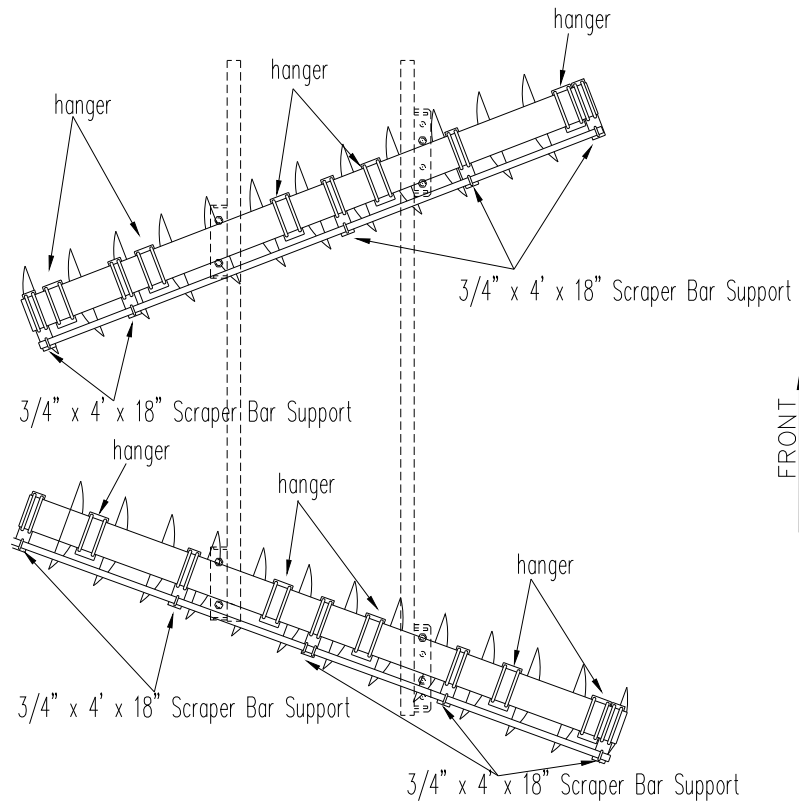
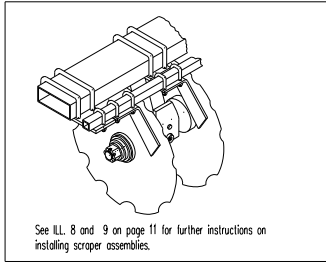
**SCRAPER BAR SUPPORT PATTERN - MODEL 8550
21 BLADE - 14" (356mm) SPACING**



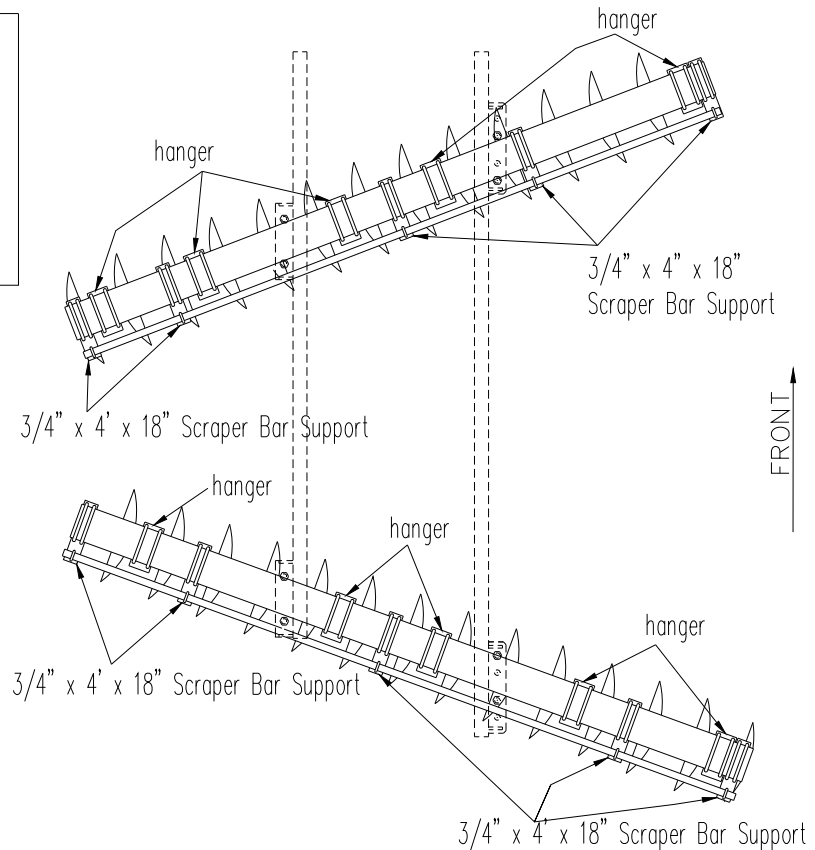
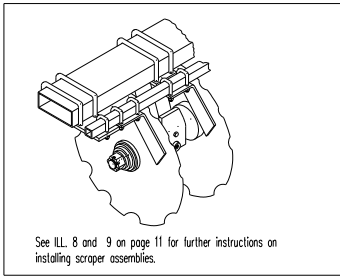
**SCRAPER BAR SUPPORT PATTERN - MODEL 8550
23 BLADE - 14" (356mm) SPACING**



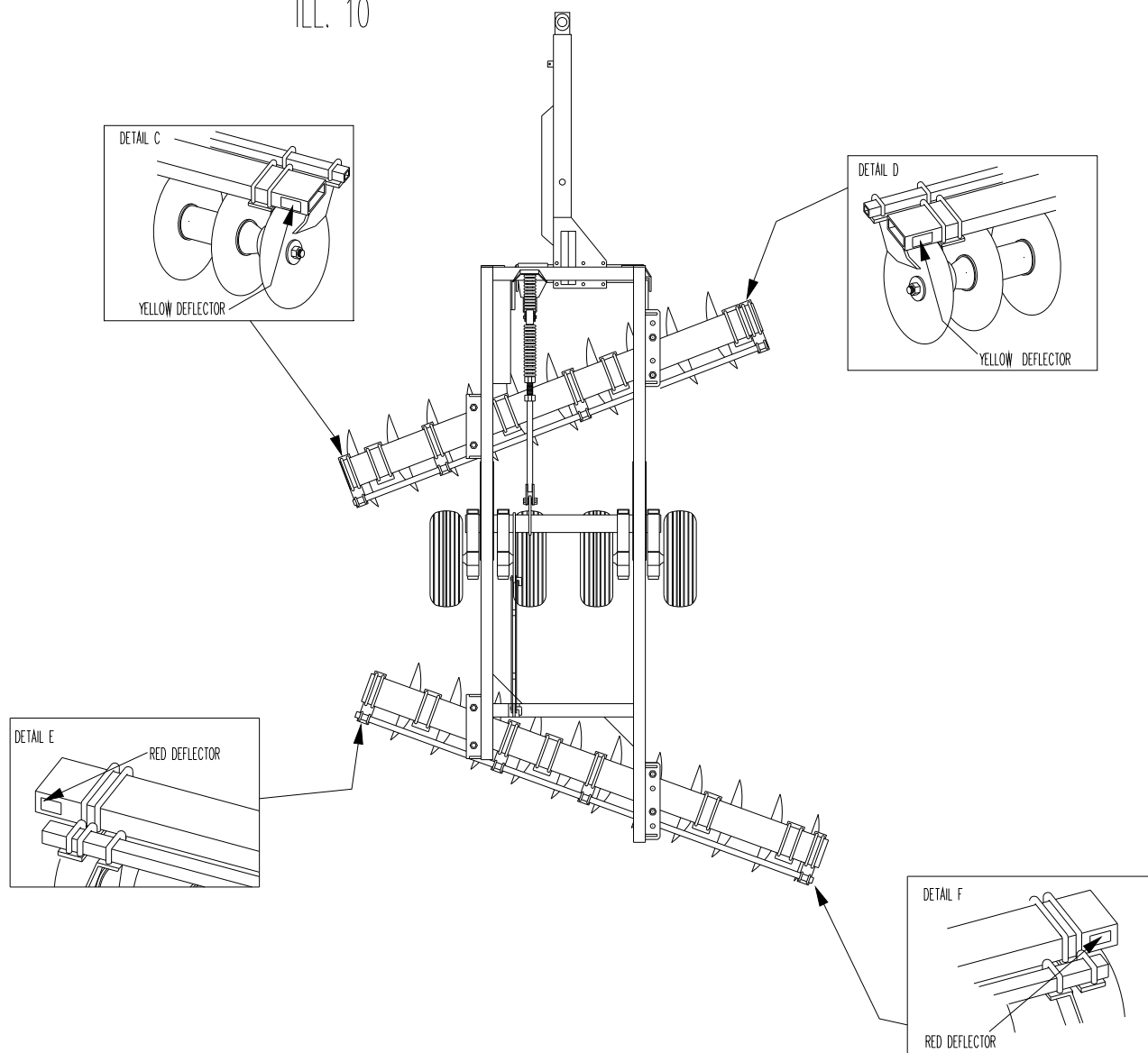
SCRAPER BAR SUPPORT PATTERN - MODEL 8550
25 BLADE - 14" (356mm) SPACING



SCRAPER BAR SUPPORT PATTERN - MODEL 8550
27 BLADE - 14" (356mm) SPACING



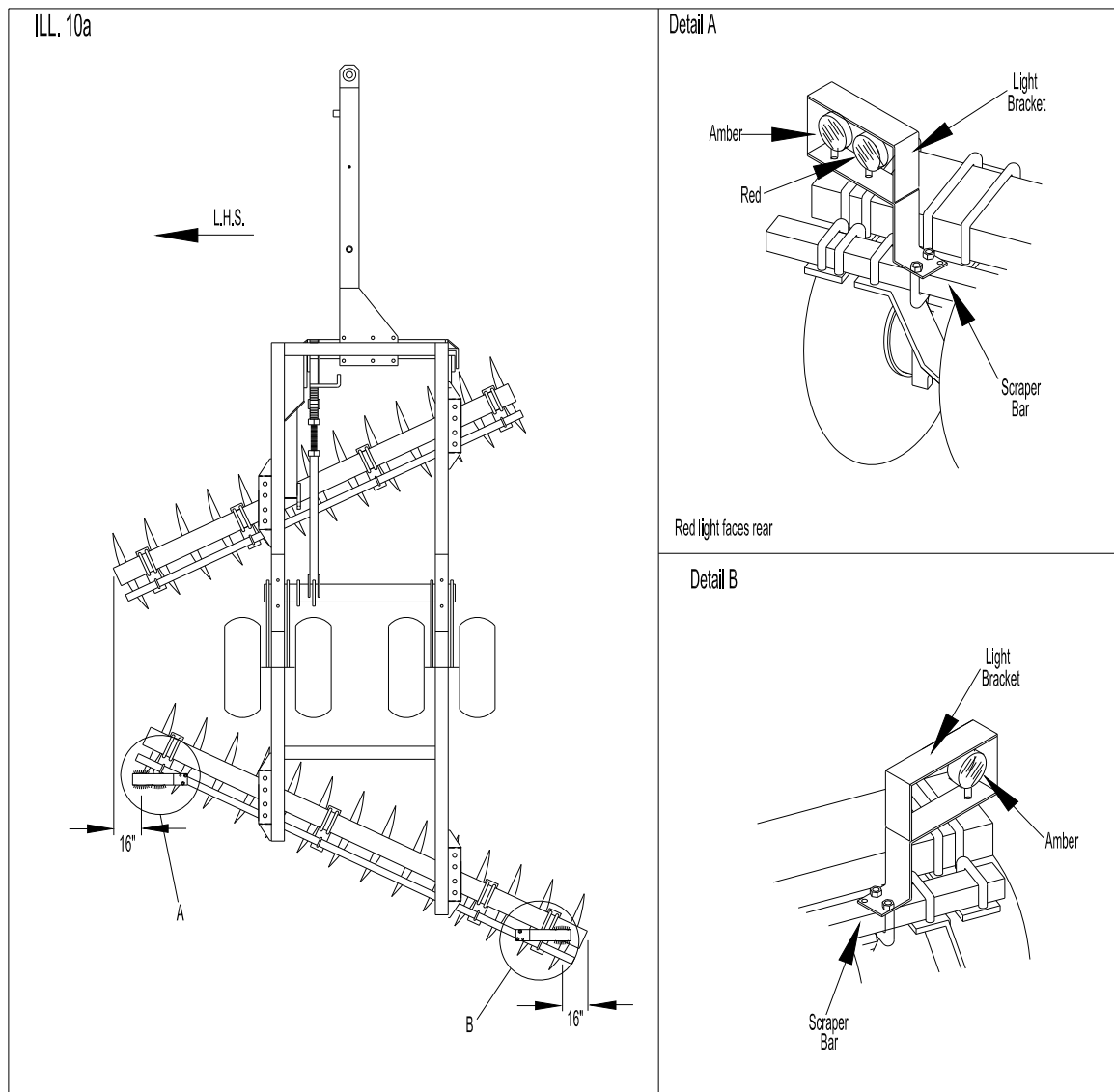
ILL. 10



REFLECTOR DECAL INSTALLATION – See ILL. 10

NOTE: Before installing decals, clean the area they will be placed on.

- a) Place one 2" x 9" (50.8 mm x 228.6 mm) red reflector decal on rear side of each rear gang beam. Locate decals approximately 1" (25.4 mm) from end of gang beam. See detail "E" and "F".
- b) Place one 2" x 9" (50.8 mm x 228.6 mm) yellow reflector decal on front side of each front gang beam. Locate decals approximately 1" (25.4mm) from end of gang beam. See detail "C" and "D".



16. SAFETY LIGHT KIT - MOUNT INSTRUCTIONS (SEE ILL. 10a)

- A) Fasten one (1) lamp bracket on each end of rear scraper bar. Lamp brackets are L.H. and R.H. Fasten each lamp bracket with one (1) $\frac{1}{2}$ " x 2" U-bolt c/w nuts and lockwashers. Locate as shown in Detail "A" and "B". Leave U-bolts loose.
- B) Fasten one (1) amber lamp and one (1) red lamp on L.H. lamp bracket. Position amber and red lamps so they face the rear with the amber lamp on the outside. Install lamps through $\frac{3}{4}$ " (19.0mm) holes in lamp bracket. Secure with nuts. Leave nut loose so ring connector from wiring can be installed. See Detail "A".
- C) Fasten one (1) amber lamp on R.H. lamp bracket. Position so amber lamp faces rear. Install lamp through $\frac{3}{4}$ " holes in lamp bracket. Secure with nut. Leave nut loose so ring connector from wiring can be installed. See Detail "B".
- D) Position each lamp bracket so outer lamp is no more than 16" from widest part of disc to centre of lamp. Next, tighten $\frac{1}{2}$ " x 2" U-bolts.

IMPORTANT: Paragraphs "B", "C", "D", and ILL. 30 describes safety light position for North America. For other countries check local laws and regulations for required warning lamp mounting positions.



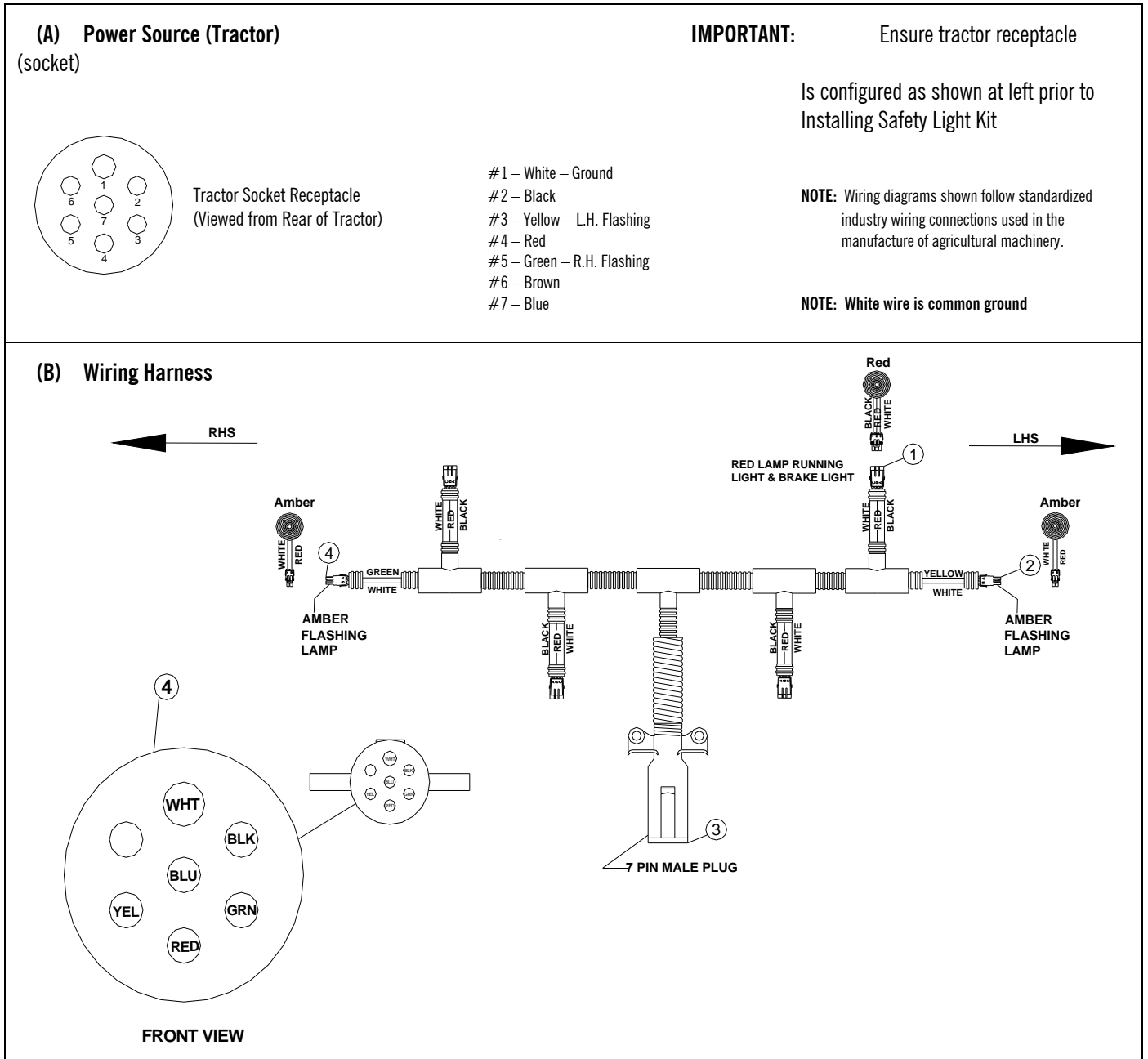
CAUTION: WHEN TRANSPORTING DISC OVER PUBLIC ROADS USE A SMV EMBLEM (NOT SUPPLIED BY EZZE-ON) AND WARNING LIGHTS FOR PROTECTION OF TRACTOR AND OTHER MOTOR VEHICLE OPERATORS. CHECK LOCAL LAWS FOR WIDTH RESTRICTIONS.

WARNING LIGHT INSTALLATION CONTINUED:

E) INSTALL ELECTRICAL WIRING AS FOLLOWS:

See Fig. 10b – Lay wiring harness on hitch and along R.H.S. of frame with 7 pin male plug, arrow 3, located at front of hitch. The wiring harness is tagged L.H.S. (left hand side) and R.H.S. (right hand side) at outer plugs, arrow 2. When laying harness on frame ensure L.H. end of harness is placed on L.H.S. of frame and R.H. end of harness is placed on R.H.S. of frame. L.H.S and R.H.S. of disc is determined by viewing disc from rear. **NOTE:** The R.H. and L.H side of harness must be properly positioned to allow signal lights to work correctly. Run L.H. and R.H. ends of harness along rear of frame and rear gangs back up to lamps. Tie harness to frame, gang beam and lamp supports as required with tie straps. Next plug in each amber lamps to two wire plugs, arrow 2. Plug in red lamp to a 3 wire plug, arrow 2.

FIG. 10b



COMPONENTS:

2 - Lamps - amber both sides

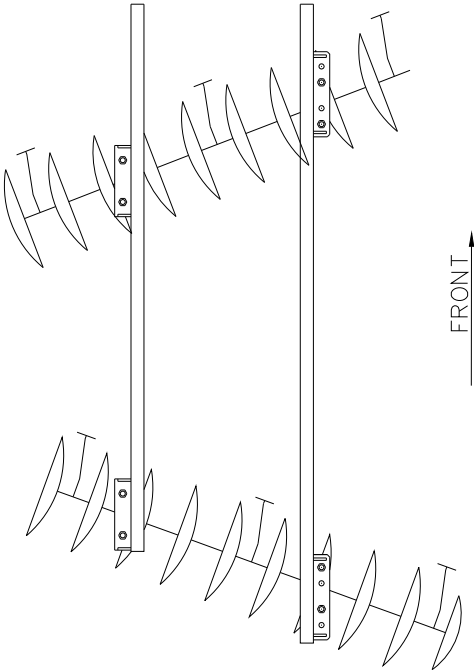
10 – Cable ties

1 - Lamp - red one side

1 – Wiring Harness

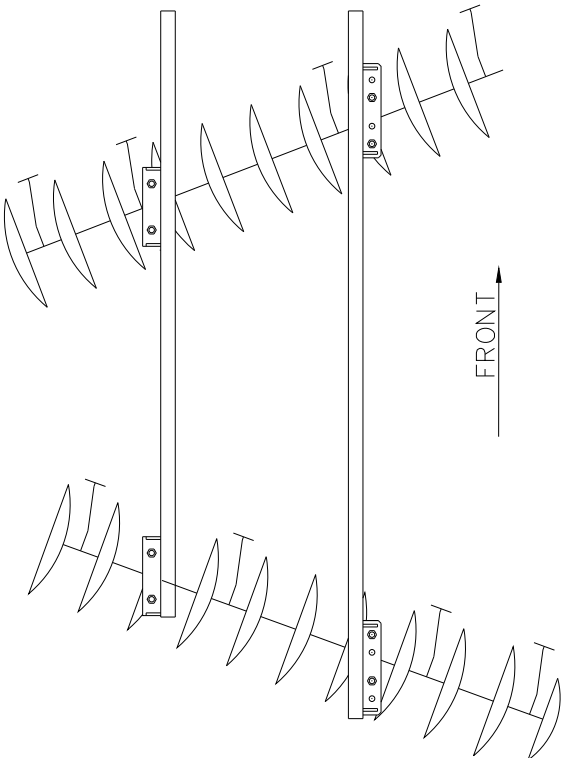
MODEL 8550
GANG PATTERN - 14" (356mm) SPACING
19 BLADES/6 BEARINGS

APPROX. WIDTH
10-1/2 ft



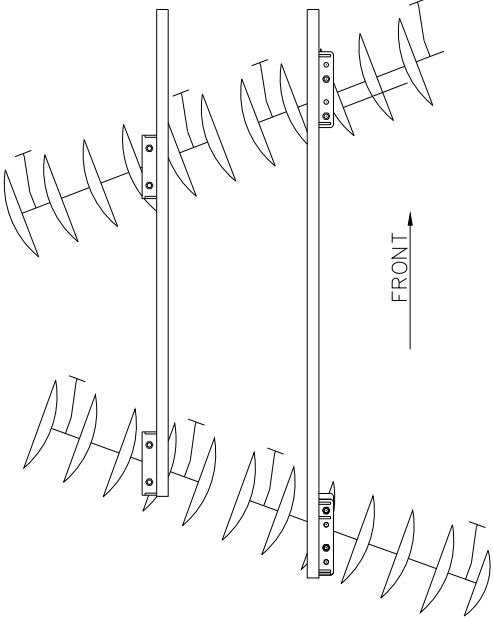
MODEL 8550
GANG PATTERN - 14" (356mm) SPACING
21 BLADES/8 BEARINGS

APPROX. WIDTH
11-1/2 ft



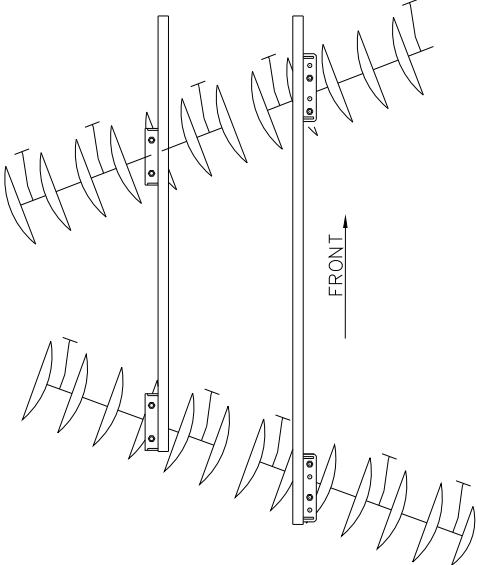
**MODEL 8550
GANG PATTERN - 14" (356mm) SPACING
23 BLADES/8 BEARINGS**

**MODEL 8550
APPROX. WIDTH
12-1/2 ft**



**MODEL 8550
GANG PATTERN - 14" (356mm) SPACING
25 BLADES/10 BEARINGS**

**APPROX. WIDTH
14 ft**



MODEL 8550
GANG PATTERN - 14" (356mm) SPACING
27 BLADES/10 BEARINGS

APPROX. WIDTH
15-1/2 ft

