

Ezee-On

MODEL 8550 DISC HEAVY DUTY OFFSET

PARTS MANUAL

Manufactured by
Ezee-On Manufacturing
Vegreville, Alberta Canada

725G

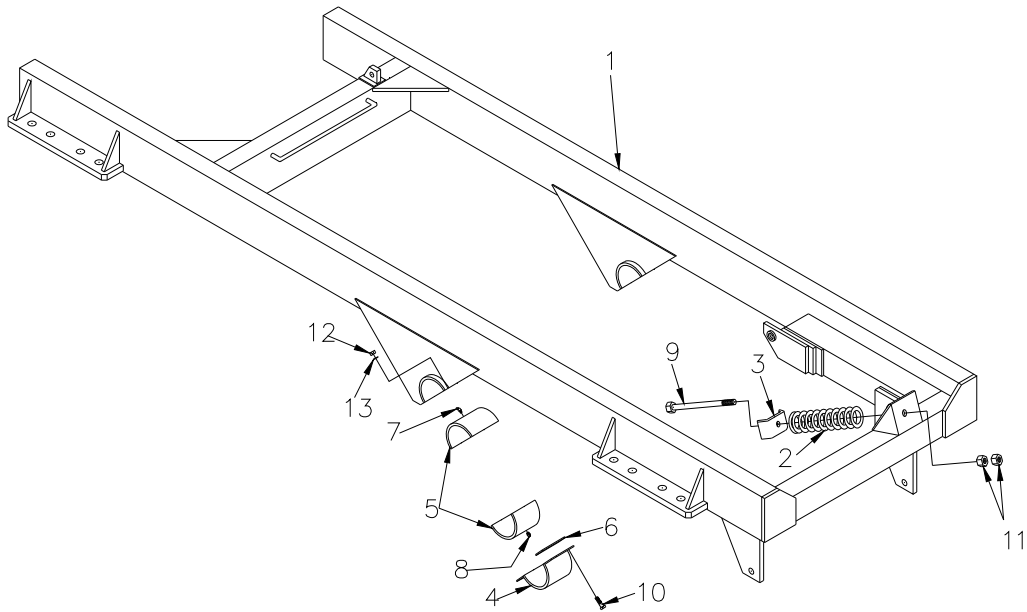
Printed in Canada

PARTS LIST INDEX

| | |
|---|---------|
| PAINT and DECALS | Page 35 |
| MAIN FRAME ASSEMBLY | Page 36 |
| HITCH and CRANK ASSEMBLY | Page 37 |
| ROCKSHAFT and WHEEL - Clamp on Spindle Type - (used 2003 and prior) | Page 39 |
| ROCKSHAFT and WHEEL - Bolt in Spindle Type - (used after 2003) | Page 40 |
| GANG BEAM ASSEMBLY | Page 41 |
| DISC GANG ASSEMBLY | Page 43 |
| HYDRAULIC SYSTEM | Page 44 |
| SCRAPER ASSEMBLY | Page 45 |
| ROCKSHAFT CYLINDER - N4 TYPE | Page 46 |
| CYLINDER SEAL KIT | Page 47 |

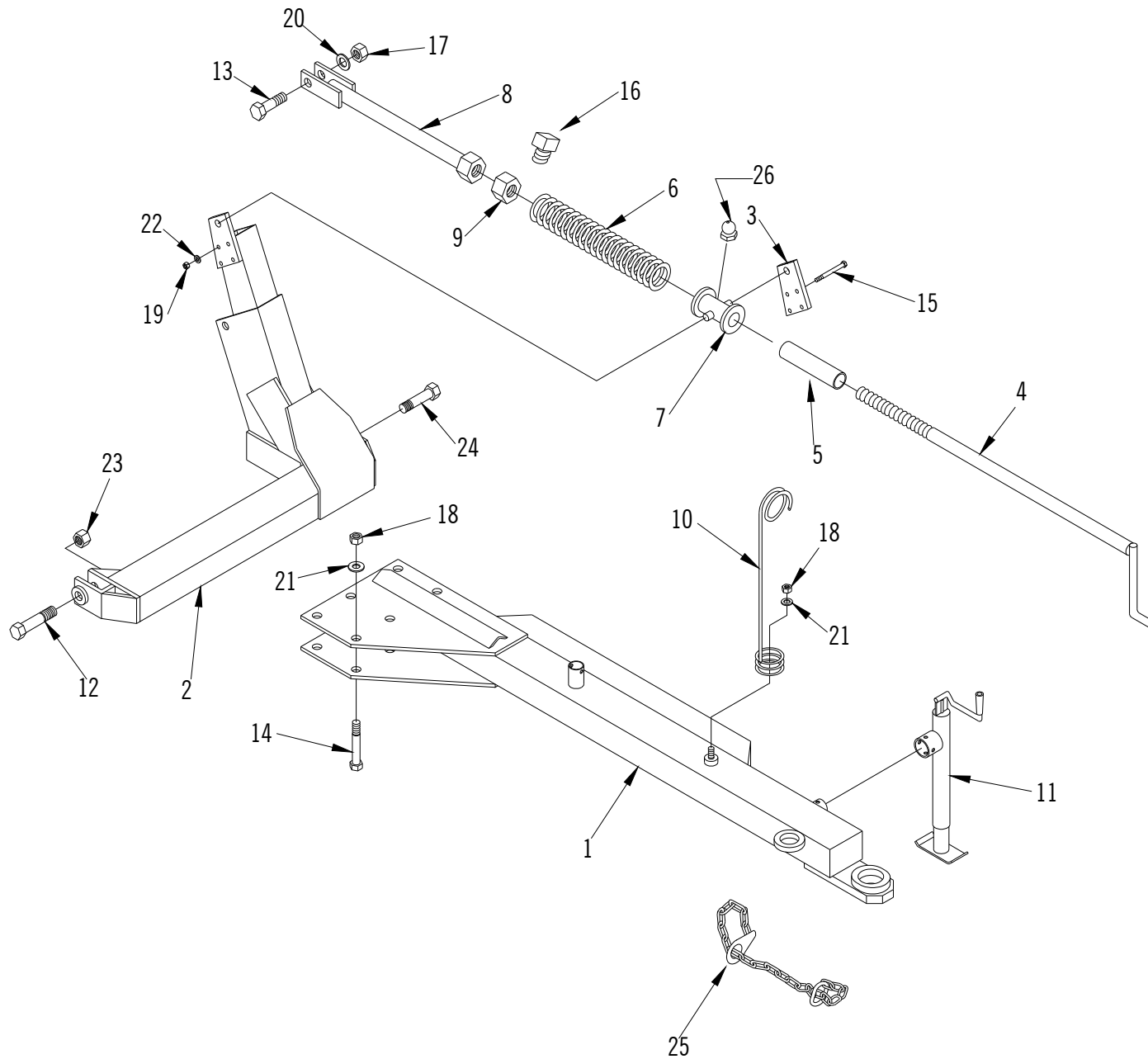
PAINT and DECALS

| PART NO. | DESCRIPTION | QTY. REQ'D |
|----------|---|------------|
| L001 | Ezee-On Yellow Paint - 1 qt. can | * |
| L002 | Ezee-On Yellow Paint - 1/2 pt. can | * |
| L015 | Black Paint - 1 qt. can | * |
| L016 | Black Paint - 1/2 pt. can | * |
| DF13002 | Ezee-On Decal - 2-1/2" x 15" (63.5mm x 381mm) | 2 |
| DF12265 | Model 8550 Decal | 2 |
| DF9510 | Large Caution Decal | 1 |
| DF10050 | Red Reflector | 4 |
| DF10050 | Yellow Reflector | 4 |



MODEL 8550 MAIN FRAME PARTS LIST

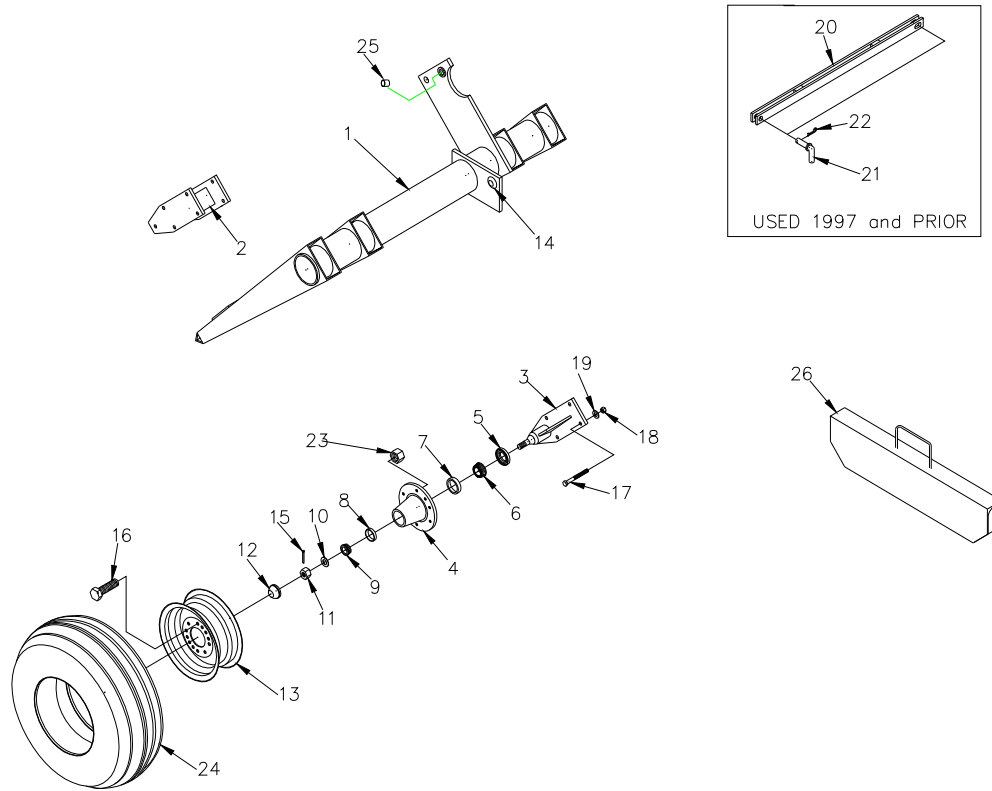
| REF. NO. | PART NO. | DESCRIPTION | QTY. REQ'D |
|----------|----------|--|------------|
| 1 | DFA12271 | Main Frame | 1 |
| 2 | DC9615 | 11" (279mm) Long Compression Spring | 1 |
| 3 | DFA10536 | Single Spring Cushion Plate | 1 |
| 4 | DFA5041 | Rockshaft Bearing Cap | 2 |
| 5 | DR5259 | Rockshaft Bearing Liner Half | 4 |
| 6 | DF5063 | Rockshaft Bearing Cap Shim | 12 |
| 7 | DR5260 | 1/4" (6.35mm) x 28 - 45 Degree Grease Fitting | 2 |
| 8 | 10GN1 | 1/4" (6.35mm) x 28 - Straight Grease Fitting | 2 |
| 9 | B100140 | 1" x 14" N.C. (25.4mm x 356mm) Hex. Bolt | 1 |
| 10 | B075025 | 3/4" x 2-1/2" N.C. (19.0mm x 63.5mm) Hex. Bolt | 4 |
| 11 | BN100 | 1" N.C. (25.4mm) Hex. Nut | 2 |
| 12 | BN075 | 3/4" N.C. (19.0mm) Hex. Nut | 4 |
| 13 | BW075L | 3/4" (19.0mm) Lockwasher | 4 |



HITCH and CRANK ASSEMBLY

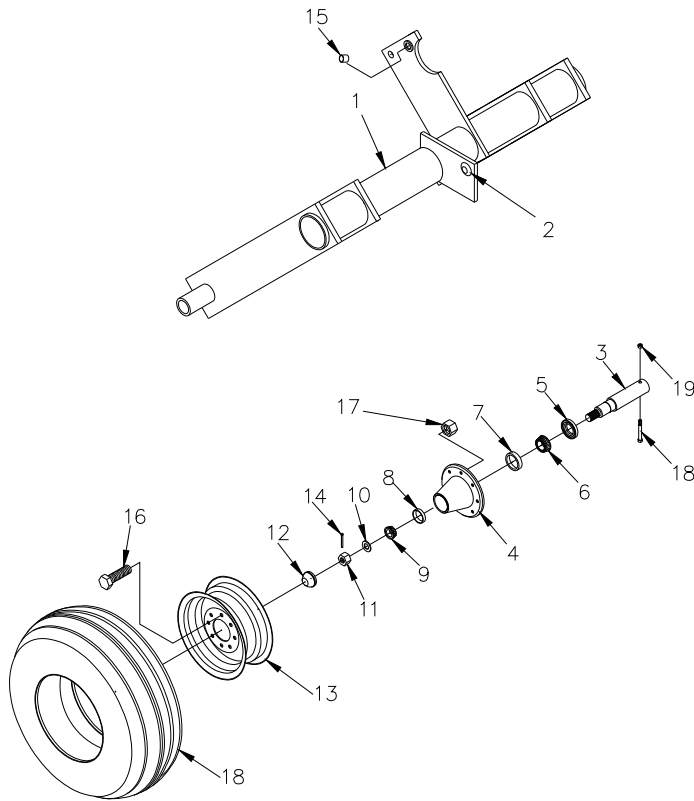
MODEL 8550 HITCH and CRANK ASSEMBLY PARTS LIST

| REF. NO. | PART NO. | DESCRIPTION | QTY. REQ'D |
|----------|----------|---|------------|
| 1 | DHA12015 | Hitch Tongue Assembly | 1 |
| 2 | DHA12016 | Hitch Draw Bar - (used on S/N 51789 and prior) | 1 |
| | DHA | Hitch Draw Bar - (used on S/N after 51789) | 1 |
| 3 | DH5146 | Levelling Arm Lug | 1 |
| 4 | DCA9970 | Crank - 50" Long (1270mm) | 1 |
| 5 | DC13098 | Spacer Tube - 11" (279mm) Lg | 1 |
| 6 | DC9618 | 22" (559mm) Spring | 1 |
| 7 | DCA12310 | Bearing Tube - Levelling Crank | 1 |
| 8 | DCA8577 | Levelling Link - 21" (533mm) | 1 |
| 9 | DH5 | 2" N.C. (50.8mm) Heavy Hex. Nut - Drilled for Set Screw | 1 |
| 10 | DHA5161 | Hose Support | 1 |
| 11 | DHB5170 | Hitch Jack | 1 |
| 12 | DH12293 | 1-1/4" N.C. x 6" (31.7mm x 152mm) Gr. 8 Hex Bolt | 1 |
| 13 | DR5215 | 1-1/4" x 4-3/4" (31.7mm x 121mm) Hex. Bolt (Special) | 1 |
| 14 | B100065 | 1" x 6-1/2" N.C. (25.4mm x 165mm) Hex. Bolt | 6 |
| 15 | BO50050 | 1/2" x 5" N.C. (12.7mm x 127mm) Hex. Bolt | 4 |
| 16 | BO50010S | 1/2" x 1" N.C. (12.7mm x 25.4mm) Square Head Set Screw | 1 |
| 17 | BN125 | 1-1/4" N.C. (31.7mm) Hex. Nut | 1 |
| 18 | BN100 | 1" N.C. (25.4mm) Hex. Nut | 6 |
| 19 | BN050 | 1/2" N.C. (12.7mm) Hex. Nut | 4 |
| 20 | BW125L | 1-1/4" (31.7mm) Lockwasher | 1 |
| 21 | BW100L | 1" (25.4mm) Lockwasher | 6 |
| 22 | BW050L | 1/2" (12.7mm) Lockwasher | 4 |
| 23 | DH12295 | 1-1/4" (31.7mm) Nylon Lock Nut | 2 |
| 24 | DH12294 | 1-1/4" N.C. x 5" (31.7mm x 127mm) Gr. 8 Hex. Bolt | 1 |
| 25 | D13090 | Safety Chain 20200 lbs (9165) | 1 |
| 26 | 10GN1 | 1/4" - 28 Grease Fitting | 1 |



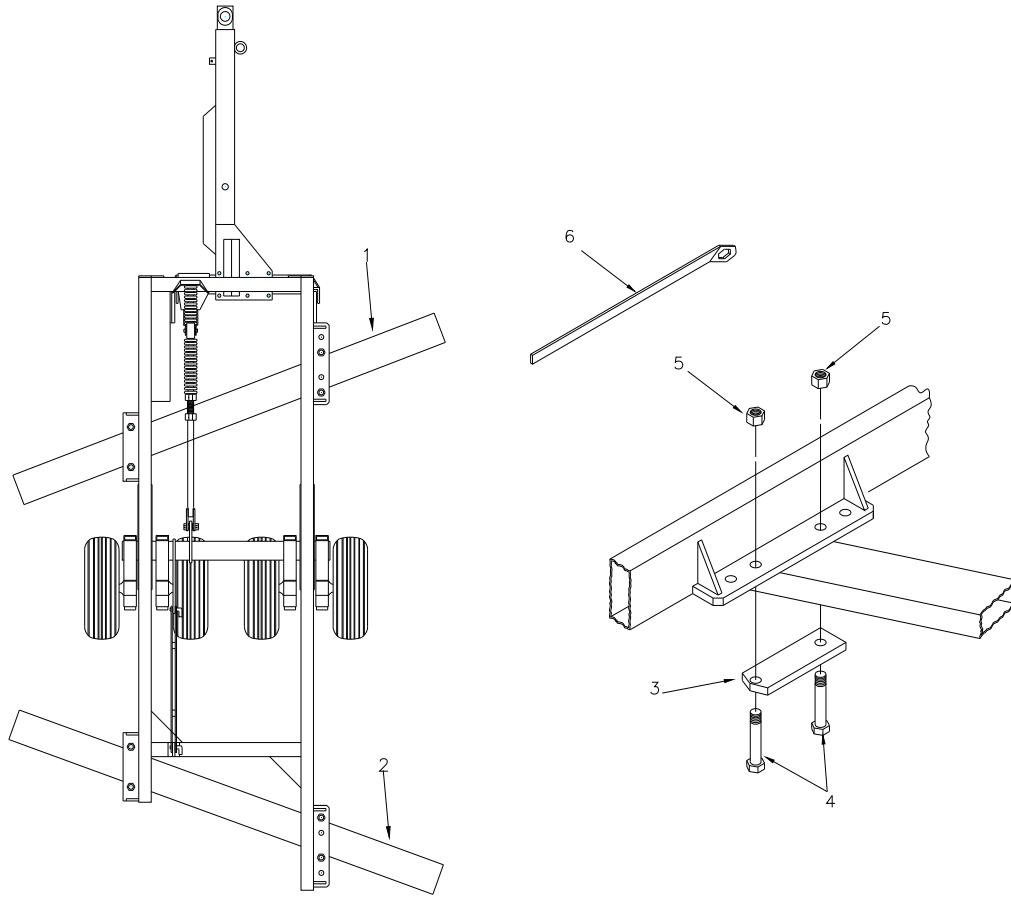
MODEL 8550 ROCKSHAFT and WHEEL ASSEMBLY PARTS LIST - Clamp-on Spindle Type
(used 2003 and prior)

| REF. NO. | PART NO. | DESCRIPTION | QTY. REQ'D |
|----------|-------------|--|------------|
| 1 | DRA12035 | Rockshaft | 1 |
| 2 | DRA9645 | Wheel Leg Spacer - 7-1/2" (190mm) Long | 2 |
| 3 | DRA5571 | Spindle - 812 - 5 Bolt Type | 4 |
| 4 | DRA9679 | 812 Hub - c/w cups | 4 |
| 5 | DR9680 | Grease Seal - #SE17 | 4 |
| 6 | DR9684 | Inner Cone Bearing - 3780 | 4 |
| 7 | DR9682 | Inner Cup - 3720 | 4 |
| 8 | DR9683 | Outer Cup - 2720 | 4 |
| 9 | DR9685 | Outer Cone Bearing - 2790 | 4 |
| 10 | BW20010318F | 2" O.D. x 1-1/37" I.D. x .187" (50.8mm x 26.2mm x 4.75mm) Flatwasher | 4 |
| 11 | DR110 | 1" N.F. (25.4mm) Hex. Slotted Nut | 4 |
| 12 | DR9681 | Hub Cap | 4 |
| 13 | S81509 | 15" x 10" (381mm x 254mm) 8 Hole rim | 4 |
| 14 | DR5227 | 1-1/4" (31.7mm) Ball Joint (Weld-on) | 1 |
| 15 | BP15125 | 5/32" x 1-1/4" (3.8mm x 31.7mm) Cotter Pin | 4 |
| 16 | DR9671 | 9/16" x 1-11/16" N.F. (14.2mm x 42.6mm) Wheel Stud | 32 |
| 17 | B062060 | 5/8" x 6" N.C. (15.7mm x 152mm) Hex. Bolt | 20 |
| 18 | BN062 | 5/8" N.C. (15.7mm) Hex. Nut | 20 |
| 19 | BN062L | 5/8" (15.7mm) Lockwasher | 20 |
| 20 | DRA12036 | Lock-up Strap - (used 1997 and prior) | 1 |
| 21 | DRA5248 | Lock-up Pin - (used 1997 and prior) | 2 |
| 22 | DW25 | Hair Pin - (used 1997 and prior) | 2 |
| 23 | DR9670 | 9/16" N.F. (14.2mm) Hex. Nut | 32 |
| 24 | 125L15F | 12.5L x 15 Fl L/R AF≅ | 4 |
| 25 | DR13120 | 1/4" x 1-1/4" (31.8 x 31.8mm) Long Steel Insert | 1 |
| 26 | DRA12037 | Transport Lockup Bracket | 1 |



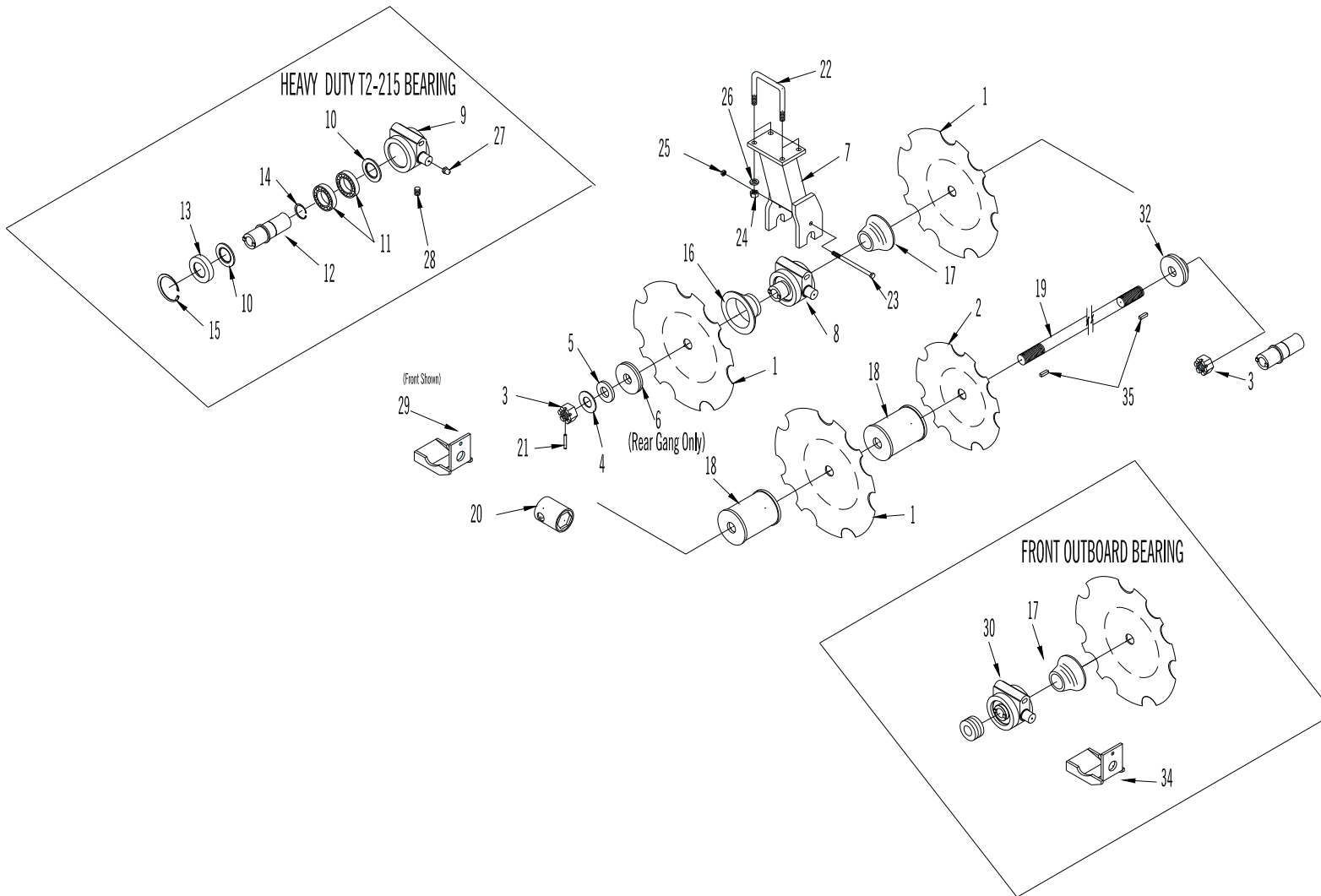
MODEL 8550 ROCKSHAFT and WHEEL ASSEMBLY PARTS LIST - Bolt-in Spindle Type
(used after 2003)

| REF. NO. | PART NO. | DESCRIPTION | QTY. REQ'D |
|----------|-------------|--|------------|
| 1 | DRA12269 | Rockshaft | 1 |
| 2 | DR5227 | 1-1/4" (31.7mm) Ball Joint – weld-on | 1 |
| 3 | DR13004 | Spindle - 812 - 13-3/4" (348mm) | 4 |
| 4 | DRA9679 | 812 Hub - c/w cups | 4 |
| 5 | DR9680 | Grease Seal - #SE17 | 4 |
| 6 | DR9684 | Inner Cone Bearing - 3780 | 4 |
| 7 | DR9682 | Inner Cup - 3720 | 4 |
| 8 | DR9683 | Outer Cup - 2720 | 4 |
| 9 | DR9685 | Outer Cone Bearing - 2790 | 4 |
| 10 | BW20010318F | 2" O.D. x 1-1/32" I.D. x .187" (50.8mm x 26.1mm x 4.75mm) Flatwasher | 4 |
| 11 | DR110 | 1" N.F. (25.4mm) Hex. Slotted Nut | 4 |
| 12 | DR9681 | Hub Cap | 4 |
| 13 | S81509 | 15" x 10" (381 x 254mm) 8 Hole rim | 4 |
| 14 | BP15125 | 5/32" x 1-1/4" (3.8 x 31.7mm) Cotter Pin | 4 |
| 15 | DR13120 | 1-1/4" x 1-1/4" (31.7 x 31.7mm) Long Steel Insert | 1 |
| 16 | DR9671 | 9/16" x 1-11/16" N.F. (14.2 x 42.6mm) Wheel Stud | 32 |
| 17 | DR9670 | 9/16" N.F. (14.2mm) Hex Nut | 32 |
| 18 | BO50040 | 1-1/2" x 4" N.C. (12.7 x 101.6mm) Hex Bolt | 4 |
| 19 | BN050L | 1/2" N.C. (12.7mm) Hex Nylon Lock Nut | 4 |



**MODEL 8550 DISC
GANG BEAM PARTS LIST**

| REF. NO. | PART NO. | DESCRIPTION | QTY. REQ'D |
|----------|------------|---|------------|
| 1 | | Front Gang Beam - 14" (356mm) spacing - (10" x 4" x 1/2" tube) | |
| | DBS 121-10 | 122" (3099mm) Beam - 17 Blade Disc | 1 |
| | DBS 136-10 | 136" (3454mm) Beam - 19 Blade Disc | 1 |
| | DBS 150-10 | 150" (3810mm) Beam - 21 Blade Disc | 1 |
| | DBS 165-10 | 165" (4191mm) Beam - 23 Blade Disc | 1 |
| | DBS 179-10 | 179" (4547mm) Beam - 25 Blade Disc | 1 |
| | DBS 194-10 | 194" (4928mm) Beam - 27 Blade Disc | 1 |
| 2 | | Rear Gang Beam - 14" (356mm) spacing - (10" x 4" x 1/2" tube) | |
| | DBS 136-10 | 136" (3454mm) Beam - 17 Blade Disc | 1 |
| | DBS 150-10 | 150" (3810mm) Beam - 19 Blade Disc | 1 |
| | DBS 165-10 | 165" (4191mm) Beam - 21 Blade Disc | 1 |
| | DBS 179-10 | 179" (4547mm) Beam - 23 Blade Disc | 1 |
| | DBS 194-10 | 194" (4928mm) Beam - 25 Blade Disc | 1 |
| | DBS 209-10 | 209" (5309mm) Beam - 27 Blade Disc | 1 |
| 3 | DG12251 | Gang Beam Clamp - 2 Hole | 4 |
| 4 | DG12254 | 1-1/2" x 8-1/2" N.C. (38.1mm x 216mm) Gr. 5 Hex. Bolt | 8 |
| 5 | BN150 | 1-1/2" N.C. (38.1mm) Hex. Nut | 8 |
| 6 | DGA12260 | Wrench for 1-1/2" (38.1mm) Bolts | 2 |

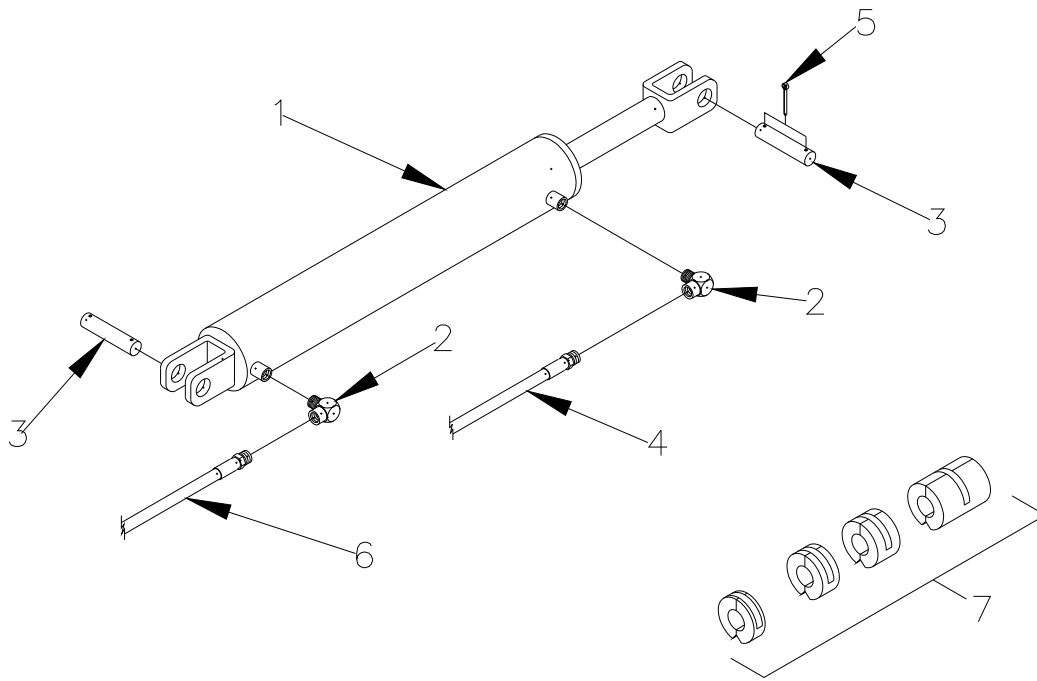


GANG ASSEMBLY

MODEL 8550 DISC GANG ASSEMBLY

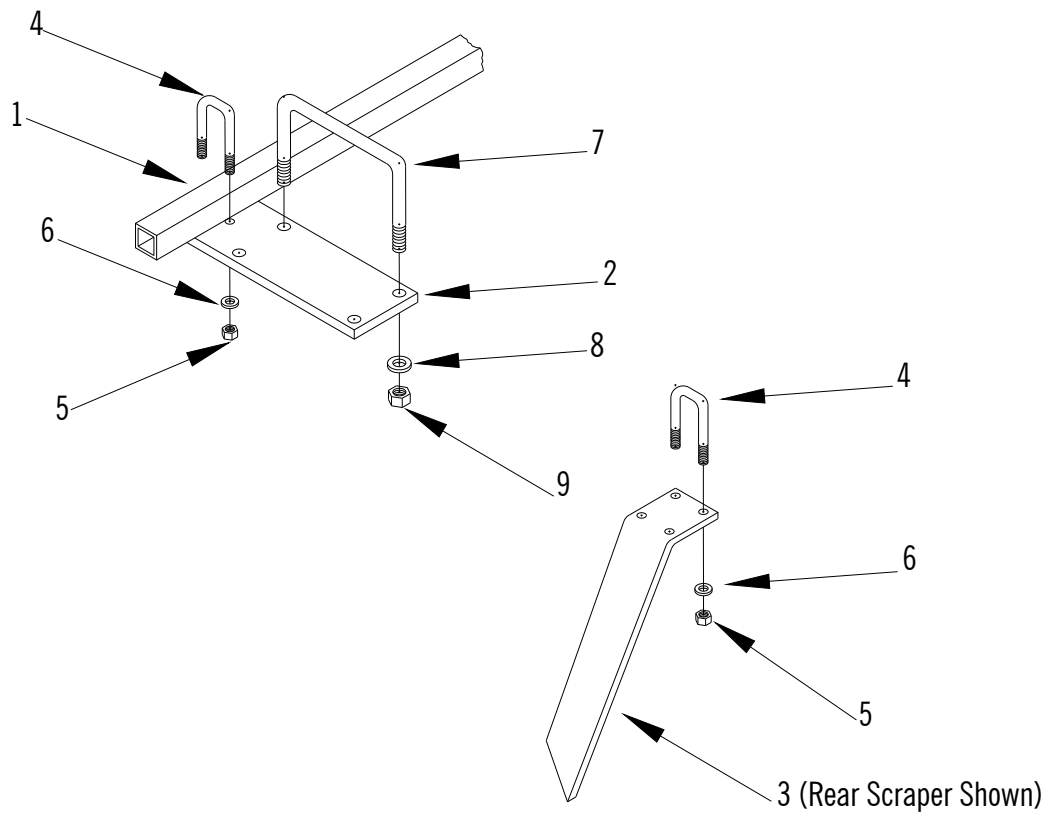
| REF. NO. | PART NO. | DESCRIPTION | QTY. REQ'D |
|----------|----------|---|------------|
| 1 | DG20118 | 32" x 12.7 mm (1/2") Notched Disc blade | * |
| 2 | DG20051 | 28" x 10 mm (.393") Notched Disc Blade - Rear Outrigger | * |
| 3 | DG12252 | 2" N.C. (50.8mm) Heavy Hex. Slotted Nut (Heat Treated) | 4 |
| 4 | DG89 | 1/4" (6.35mm) Shim Washer | * |
| 5 | DG88 | 1/2" (12.7mm) Shim Washer | * |
| 6 | DGA12257 | Head Washer - Rear Gang - 7" OD x 2" long (178mm x 50.8mm) c/w key way - machined | * |
| 7 | DGA12261 | Std. Trunion Mounted Bearing Hanger | * |
| 8 | DGB9940 | T2-215 Housing c/w Bearings, Seals, 9" (229mm) Steel Sleeve, Snap Rings and Cap - Less 1/2 Spools | * |
| 9 | DG9901 | T2-215 Bearing Housing | * |
| 10 | DG9905 | 215 Bearing Seal- (National #200322) | * |
| 11 | DG9904 | #6215 Ball Bearing Notched for Lubrication | * |
| 12 | DG9922 | 9" (229mm) Steel Sleeve w/drive lugs | * |
| | DG9924 | 7-1/2" (191mm) Steel Sleeve w/drive lugs | * |
| 13 | DG9902 | Bearing Housing Cap | * |
| 14 | DG9911 | External Snap Ring (Philip French #D1400-75) | * |
| 15 | DG9910 | Internal Snap Ring (Philip French #D1300-130) | * |
| 16 | DG9913 | Short Half Spool - 8-1/2" (216mm) O.D. (press-on type) - 14" (356mm) spacing | * |
| 17 | DG9914 | Long Half Spool - 7" (178mm) O.D. (press-on type) - 14" (356mm) spacing | * |
| 18 | DGA10560 | 14" (356mm) Spacing Full Spool - 8-1/2" (216mm) dia. washer one end | * |
| 19 | | GANG BOLTS - 14" SPACING | |
| | DGA206 | 5 BLADE - w/outrigger brg. - 77-5/8" (1972mm) long | * |
| | DGA207 | 6 BLADE - 81-3/4" (2076mm) long | * |
| | DGA208 | 7 BLADE - 96-3/8" (2448mm) long | * |
| | DGA213 | 8 BLADE - 111" (2819mm) long | * |
| | DGA209 | 9 BLADE - w/outrigger brg. - 136-5/8" (3470mm) long | * |
| | DGA167 | 10 BLADE - 140-1/4" (3562mm) long | * |
| | DGA187 | 10 BLADE - w/outrigger brg. - 149-5/8" (3800mm) long | * |
| | DGA188 | 11 BLADE - 154" (3912mm) long | * |
| 20 | DGA35 | Socket Wrench | 1 |
| 21 | DG10310 | 7/16" x 3" (10.9mm x 76.2mm) Lock Pin | 4 |
| 22 | DG12250 | 7/8" x 10" (22.0mm x 254mm) U-Bolt | * |
| 23 | B062100 | 5/8" x 10" N.C. (15.7mm x 254mm) Hex Bolt - used by machines Less bearing guards | * |
| | B062110 | 5/8" x 11 N.C. (15.7mm x 279mm) Hex Bolt - used by machines With bearing guards | * |
| 24 | BN087 | 7/8" N.C. (22.0mm) Hex Nut | * |
| 25 | BN062L | 5/8" N.C. (15.7mm) Hex Nylon Lock Nut | * |
| 26 | BW087L | 7/8" (22.0mm) Lockwasher | * |
| 27 | 10GN1 | 1/4" x 28 (6.35mm) Grease Fitting | * |
| 28 | DG9912 | Set Screw | * |
| 29 | DGA12051 | Bearing Guard - Front Gang | * |
| | DGA12052 | Bearing Guard - Rear Gang | * |
| 30 | DGB9937 | T2-215 Housing c/w bearings, seals, 7-1/2" (191mm) Steel sleeve, snap ring and cap - Outboard bearing | * |
| 31 | DGA10588 | 4" O.D. x 1-3/4" (101.6mm x 44.4mm) Long End Plate w/keyway and drive slots - Front Gang | 1 |
| 32 | DGA10589 | 8-1/2" O.D. x 2-1/8" (216mm x 53.8mm) Long End Plate w/keyway | 4 |
| 33 | DG10597 | 1/2" sq. X 1-3/4" (12.7mm x 44.4mm) key | 4 |
| 34 | DGA12053 | Bearing Guard - for Outboard Bearing | 1 |

* as required



HYDRAULIC SYSTEM

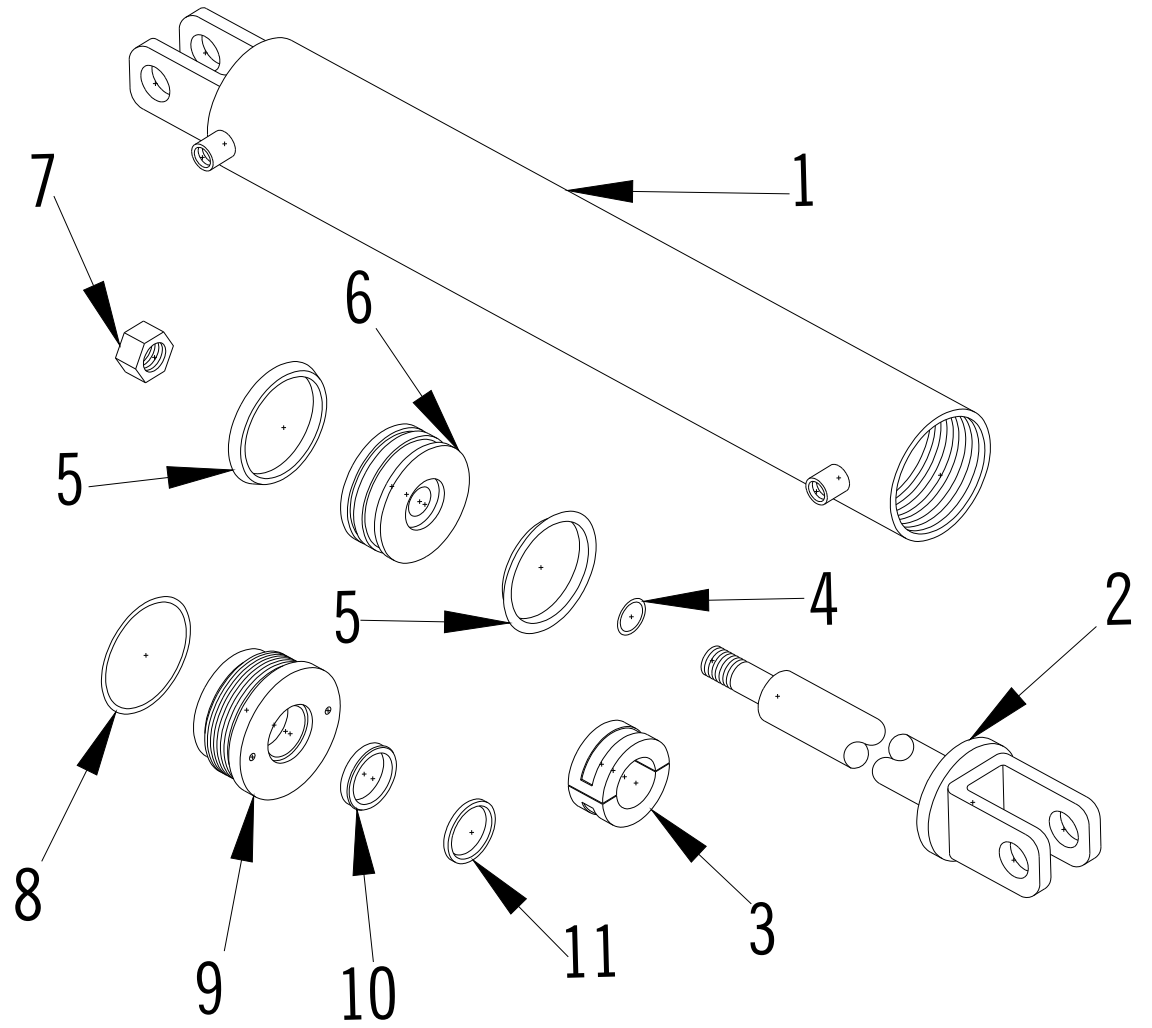
| REF. NO. | PARTS NO. | DESCRIPTION | QTY. REQ'D |
|----------|-----------|--|------------|
| 1 | 241 | 4" x 24" (101.6mm x 609.6mm) Rockshaft Cylinder | 1 |
| 2 | DL9777 | 1/2" (12.7mm) Street Elbow (Steel) | 2 |
| 3 | DR5252 | Clevis Pin - 1-1/4" x 4-3/16" (31.7mm x 106.4mm) | 2 |
| 4 | DL2966 | 1/2" x 216" (12.7mm x 5486mm) Hose | 1 |
| 5 | BP25150 | 1/4" x 1-1/2" (6.35mm x 38.1mm) Cotter Pin | 4 |
| 6 | DL2963 | 1/2" x 190" (12.7mm x 4826mm) Hose | 1 |
| 7 | C50716 | WHOA Stop Depth Control Package 8-3/4 (222mm) | 2 |



SCRAPER ASSEMBLY

| REF. NO. | PARTS NO. | DESCRIPTION | QTY. REQ'D | |
|----------|-----------|---|---|---|
| 1 | DS121-2-4 | SCRAPER BARS for 14" (356mm) SPACING - Front Gang | * | |
| | DS136-2-4 | 8 Blade - 121" (3073mm) Long | * | |
| | DS150-2-4 | 9 Blade - 136" (3454mm) Long | * | |
| | DS165-2-4 | 10 Blade - 150" (3810mm) Long | * | |
| | DS179-2-4 | 11 Blade - 165" (4191mm) Long | * | |
| | DS179-2-4 | 12 Blade - 179" (4547mm) Long | * | |
| | DS136-2-4 | SCRAPER BARS for 14" (356mm) SPACING - Rear Gang | * | |
| | DS150-2-4 | 9 Blade - 136" (3454mm) Long | * | |
| | DS165-2-4 | 10 Blade - 150" (3810mm) Long | * | |
| | DS179-2-4 | 11 Blade - 165" (4191mm) Long | * | |
| | DS179-2-4 | 12 Blade - 179" (4547mm) Long | * | |
| | DS194-2-4 | 13 Blade - 194" (4928mm) Long | * | |
| | 2 | DG12253 | Scraper Bar Support - 18" (457mm) Long | * |
| | 3 | DGA12255 | Scraper - 3/4" x 4" - (19.0mm x 102mm) Front Gang | * |
| DGA12256 | | Scraper - 3/4" x 4" - (19.0mm x 102mm) Rear Gang | * | |
| 4 | DG5309 | 5/8" x 2" (15.7mm x 50.8) U-bolt | * | |
| 5 | BN062 | 5/8" (15.7mm) Hex. nut | * | |
| 6 | BW062L | 5/8" (15.7mm) Lockwasher | * | |
| 7 | DG12250 | 7/8" x 10" (22.0mm x 254mm) U-bolt | * | |
| 8 | BW087L | 7/8" (22.0mm) Lockwasher | * | |
| 9 | BN087 | 7/8" (22.0mm) N.C. Hex. nut | * | |

* as required



**MODEL 8550 ROCKSHAFT CYLINDER
N4 TYPE**

**MODEL 8550
ROCKSHAFT CYLINDER PART LIST
N4 TYPE**

| REF. NO. | PART NO. | DESCRIPTION | QTY. REQ'D |
|----------|----------|--|------------|
| 1 | 40TU9 | Tube assembly - 4" x 24" (102mm x 610mm) | 1 |
| 2 | 10SH46 | Shaft - 1-3/4" x 24" (44.4mm x 610mm) | 1 |
| 3 | C50711 | Depth control stop ring - 1" (25.4mm) long | * |
| | C50712 | Depth control stop ring - 1-1/2" (38.1mm) long | * |
| | C50713 | Depth control stop ring - 1-3/4" (44.4mm) long | * |
| | C50717 | Depth control stop ring - 4-1/4" (108mm) long | * |
| 4 | 100R13 | 1/8" x 1-1/4" O.D. (3.0mm x 31.7mm) O'ring | 1 |
| 5 | 40CU3 | 3-1/2" x 4" x 3/8" (88.9mm x 102mm x 9.4mm) U-cup | 2 |
| 6 | 40PB5 | 4" O.D. x 2-1/2" (102mm x 63.5mm) long piston | 1 |
| 7 | 10NU4 | 1" (25.4mm) lock nut | 1 |
| 8 | 100R17 | 3/16" x 4" O.D. (4.6mm x 102mm) O'ring | 1 |
| 9 | 40HP4 | 4" O.D. x 1-3/4" I.D. (102mm x 44.4mm) head plate | 1 |
| 10 | 10RS3 | 1-3/4" x 2-1/8" x 3/8" (44.4mm x 53.8mm x 9.4mm) rod seal | 1 |
| 11 | 10WS3 | 1-3/4" x 2-1/8" x 3/16" (44.4mm x 53.8mm x 4.6mm) wiper seal | 1 |

* as required

CYLINDER SEAL KIT

| KIT NO. | CONTENTS | APPLICATION |
|---------|--|---|
| 4017N4 | 2 40CU3 1 100R13 1/8" x 1-1/4" O.D. (3.0mm x 31.7mm) O'ring 1 100R17 3/16" x 4" (4.6mm x 102mm) O.D. O'ring 1 10RS3 Rod seal 1-3/4" (44.4mm) I.D. 1 10WS3 Wiper seal 1-3/4" (44.4mm) I.D. 1 100R19 1-1/8" I.D. x 1-1/4" O.D. (28.4mm x 31.7mm) O-Ring | 4" x 24" (102mm x 610mm) Rockshaft Cylinder |